

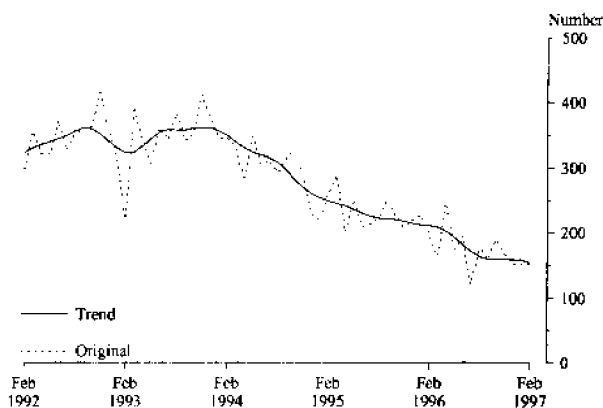
CATALOGUE NO. 8731.6

EMBARGO: 11:30 AM (CANBERRA TIME) FRI 11 APR 1997

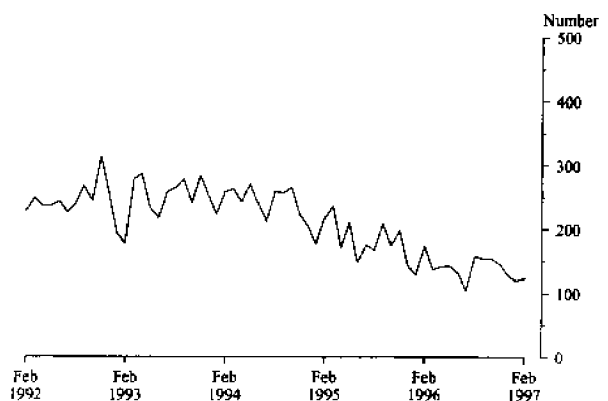
## BUILDING APPROVALS, TASMANIA, FEBRUARY 1997

### MAIN FEATURES

TOTAL DWELLING UNITS APPROVED



PRIVATE SECTOR HOUSES



#### Residential building

- The trend for the total number of dwelling units approved fell by 3.1% in February and has fallen by 6.1% over the last six months.
- In original terms the total number of dwelling units approved remained at 153 for the third consecutive month. Private sector houses accounted for 124 dwelling units.
- There were 11 new private sector houses approved in the City of Launceston followed by the Municipality of Southern Midlands (10) and the Municipalities of Brighton, Kingborough and Meander Valley each with 9.

- The value of new residential building approved was \$13.7 million.

#### Non-residential building

- The value of non-residential building approved in February was \$12.5 million of which \$8.9 million was private sector work. There were 4 projects valued at more than \$1 million.

#### INQUIRIES

- for more information about statistics in this publication and the availability of related unpublished statistics, contact John Radimissis on Adelaide (08) 8237 7590 or any ABS State Office.
- for information about other ABS statistics and services please refer to the back of this publication.

TABLE 1. DWELLING UNITS APPROVED

Period	New houses			New other residential buildings			Conversions, etc.	Total (a)			Trend estimate
	Private sector	Public sector	Total	Private sector	Public sector	Total		Private sector	Public sector	Total	
1993-94	3,065	48	3,113	973	61	1,034	11	4,048	110	4,158	..
1994-95	2,570	6	2,576	545	51	596	14	3,129	57	3,186	..
1995-96	1,917	21	1,938	448	153	601	7	2,372	174	2,546	..
1995-96 July-February	1,365	19	1,384	302	74	376	5	1,672	93	1,765	..
1996-97 July-February	1,084	15	1,099	110	52	162	14	1,203	72	1,275	..
1995— December	143	2	145	56	18	74	—	199	20	219	214
1996— January	129	6	135	82	10	92	1	212	16	228	212
February	172	—	172	15	10	25	—	187	10	197	211
March	137	1	138	25	2	27	—	162	3	165	209
April	141	—	141	29	75	104	1	171	75	246	203
May	143	—	143	32	—	32	—	175	—	175	193
June	131	1	132	60	2	62	1	192	3	195	182
July	104	4	108	13	—	13	—	117	4	121	172
August	158	—	158	18	—	18	1	177	—	177	164
September	154	2	156	4	—	4	—	158	2	160	160
October	154	—	154	11	22	33	3	168	22	190	160
November	145	1	146	18	4	22	—	163	5	168	160
December	128	2	130	12	11	23	—	140	13	153	159
1997— January	117	1	118	25	—	25	10	147	6	153	159
February	124	5	129	9	15	24	—	133	20	153	154

(a) Includes Conversions, etc. See paragraphs 10-12 of the Explanatory Notes.

TABLE 2. VALUE OF BUILDING APPROVED  
(\$'000)

Period	New residential building									Alterations and additions to residential buildings	Non-residential building		Total building	
	Houses			Other residential buildings			Total				Private sector	Total	Private sector	Total
	Private sector	Public sector	Total	Private sector	Public sector	Total	Private sector	Public sector	Total					
1993-94	237,881	4,190	242,071	55,619	4,273	59,892	293,499	8,463	301,963	39,522	81,251	145,922	413,933	487,407
1994-95	210,842	510	211,352	29,696	3,575	33,271	240,537	4,085	244,623	39,963	117,984	161,567	397,901	446,152
1995-96	163,633	1,649	165,282	37,698	14,465	52,163	201,330	16,114	217,445	36,890	119,849	216,752	356,114	471,086
1995— December	12,250	148	12,398	5,060	1,374	6,434	17,310	1,522	18,832	2,643	13,277	13,597	33,063	35,072
1996— January	10,546	636	11,182	11,825	741	12,566	22,371	1,378	23,749	3,199	18,028	42,277	43,585	69,225
February	14,668	—	14,668	1,055	1,040	2,095	15,723	1,040	16,763	3,839	7,054	13,327	26,252	33,929
March	11,465	156	11,621	1,960	178	2,137	13,424	334	13,759	2,846	9,481	12,509	25,539	29,113
April	12,198	—	12,198	2,956	7,658	10,614	15,153	7,658	22,811	3,669	9,953	11,840	27,715	38,321
May	12,221	—	12,221	1,998	—	1,998	14,219	—	14,219	3,014	8,087	32,308	25,280	49,541
June	11,255	90	11,345	4,633	180	4,813	15,889	270	16,159	3,472	9,504	11,641	28,865	31,272
July	8,436	400	8,836	691	—	691	9,127	400	9,527	2,282	24,234	38,187	35,642	49,996
August	13,732	—	13,732	1,316	—	1,316	15,048	—	15,048	3,040	7,007	17,482	25,083	35,569
September	12,960	154	13,114	135	—	135	13,095	154	13,249	1,857	9,549	10,306	24,501	25,412
October	14,089	—	14,089	691	2,533	3,225	14,780	2,533	17,314	3,530	9,585	10,647	27,814	31,491
November	12,015	67	12,082	915	354	1,269	12,930	421	13,351	3,347	6,375	7,262	22,616	23,960
December	11,090	148	11,238	800	905	1,705	11,890	1,053	12,943	2,371	3,796	4,396	18,015	19,710
1997— January	10,492	66	10,558	1,683	—	1,683	12,174	66	12,241	3,513	9,258	10,878	24,578	26,632
February	11,161	600	11,761	660	1,281	1,941	11,821	1,881	13,702	3,253	8,862	12,507	23,925	29,461

TABLE 3. VALUE OF BUILDING APPROVED, BY CLASS OF BUILDING AND OWNERSHIP  
(\$'000)

Class of building	1994-95	1995-96	July-February		1996		1997	
			1995-96	1996-97	December	January	February	
<b>PRIVATE SECTOR</b>								
New houses	210,842	163,633	116,494	93,974	11,090	10,492	11,161	
New other residential buildings	29,696	37,698	26,152	6,891	800	1,683	660	
<i>Total new residential building</i>	<i>240,537</i>	<i>201,330</i>	<i>142,645</i>	<i>100,865</i>	<i>11,890</i>	<i>12,174</i>	<i>11,821</i>	
Alterations and additions to residential buildings	39,379	34,935	23,246	22,645	2,329	3,146	3,243	
Hotels, etc.	4,933	13,965	11,355	4,802	440	661	90	
Shops	29,874	29,289	17,271	10,573	675	500	2,490	
Factories	11,841	19,168	11,686	27,011	100	600	195	
Offices	14,288	10,794	9,357	8,658	310	3,000	230	
Other business premises	14,957	16,756	13,961	9,954	1,448	1,431	920	
Educational	11,682	7,768	6,384	4,080	485	1,053	1,772	
Religious	432	1,820	1,010	310	—	—	60	
Health	17,317	12,203	7,780	7,013	55	1,010	1,724	
Entertainment and recreational	9,922	2,141	1,435	3,721	90	590	196	
Miscellaneous	2,739	5,944	2,585	2,543	193	413	1,185	
<i>Total non-residential building</i>	<i>117,984</i>	<i>119,849</i>	<i>82,824</i>	<i>78,665</i>	<i>3,796</i>	<i>9,258</i>	<i>8,862</i>	
<b>Total</b>	<b>397,901</b>	<b>356,114</b>	<b>248,715</b>	<b>202,175</b>	<b>18,015</b>	<b>24,578</b>	<b>23,925</b>	
<b>PUBLIC SECTOR</b>								
New houses	510	1,649	1,403	1,435	148	66	600	
New other residential buildings	3,575	14,465	6,449	5,073	905	—	1,281	
<i>Total new residential building</i>	<i>4,085</i>	<i>16,114</i>	<i>7,852</i>	<i>6,509</i>	<i>1,053</i>	<i>66</i>	<i>1,881</i>	
Alterations and additions to residential buildings	584	1,954	641	547	42	367	10	
Hotels, etc.	—	414	—	200	—	—	—	
Shops	—	3,375	—	595	—	—	—	
Factories	95	600	—	70	70	—	—	
Offices	7,367	6,599	2,927	11,418	—	538	965	
Other business premises	935	6,340	5,610	937	280	—	600	
Educational	12,830	25,165	21,368	10,577	—	—	—	
Religious	—	—	—	—	—	—	—	
Health	9,370	30,383	28,938	653	250	403	—	
Entertainment and recreational	320	12,798	150	2,451	—	130	2,080	
Miscellaneous	12,666	11,229	6,638	6,100	—	550	—	
<i>Total non-residential building</i>	<i>43,582</i>	<i>96,903</i>	<i>65,630</i>	<i>33,001</i>	<i>600</i>	<i>1,621</i>	<i>3,645</i>	
<b>Total</b>	<b>48,251</b>	<b>114,972</b>	<b>74,124</b>	<b>40,056</b>	<b>1,695</b>	<b>2,054</b>	<b>5,536</b>	
<b>TOTAL</b>								
New houses	211,352	165,282	117,897	95,410	11,238	10,558	11,761	
New other residential buildings	33,271	52,163	32,601	11,964	1,705	1,683	1,941	
<i>Total new residential building</i>	<i>244,623</i>	<i>217,445</i>	<i>150,497</i>	<i>107,374</i>	<i>12,943</i>	<i>12,241</i>	<i>13,702</i>	
Alterations and additions to residential buildings	39,963	36,890	23,888	23,192	2,371	3,513	3,253	
Hotels, etc.	4,933	14,379	11,355	5,002	440	661	90	
Shops	29,874	32,664	17,271	11,168	675	500	2,490	
Factories	11,935	19,768	11,686	27,081	170	600	195	
Offices	21,655	17,393	12,284	20,076	310	3,538	1,195	
Other business premises	15,892	23,096	19,571	10,891	1,728	1,431	1,520	
Educational	24,512	32,933	27,752	14,657	485	1,053	1,772	
Religious	432	1,820	1,010	310	—	—	60	
Health	26,686	42,586	36,717	7,666	305	1,413	1,724	
Entertainment and recreational	10,242	14,939	1,585	6,172	90	720	2,276	
Miscellaneous	15,405	17,173	9,223	8,643	193	963	1,185	
<i>Total non-residential building</i>	<i>161,567</i>	<i>216,752</i>	<i>148,454</i>	<i>111,665</i>	<i>4,396</i>	<i>10,878</i>	<i>12,507</i>	
<b>Total</b>	<b>446,152</b>	<b>471,086</b>	<b>322,839</b>	<b>242,231</b>	<b>19,710</b>	<b>26,632</b>	<b>29,461</b>	

**TABLE 4. NON-RESIDENTIAL BUILDING JOBS APPROVED, BY CLASS OF BUILDING AND VALUE SIZE GROUPS**

Period	\$50,000 to less than \$200,000		\$200,000 to less than \$500,000		\$500,000 to less than \$1m		\$1m to less than \$5m		\$5m and over		Total	
	No.	Value (\$'000)	No.	Value (\$'000)	No.	Value (\$'000)	No.	Value (\$'000)	No.	Value (\$'000)	No.	Value (\$'000)
<b>HOTELS, ETC.</b>												
1996 December	3	440	—	—	—	—	—	—	—	—	3	440
1997 January	1	61	—	—	1	600	—	—	—	—	2	661
February	1	90	—	—	—	—	—	—	—	—	1	90
<b>SHOPS</b>												
1996 December	1	75	—	—	1	600	—	—	—	—	2	675
1997 January	2	300	1	200	—	—	—	—	—	—	3	500
February	4	490	—	—	—	—	1	2,000	—	—	5	2,490
<b>FACTORIES</b>												
1996 December	2	170	—	—	—	—	—	—	—	—	2	170
1997 January	1	130	1	470	—	—	—	—	—	—	2	600
February	2	195	—	—	—	—	—	—	—	—	2	195
<b>OFFICES</b>												
1996 December	1	80	1	230	—	—	—	—	—	—	2	310
1997 January	5	498	2	540	—	—	1	2,500	—	—	8	3,538
February	4	390	—	—	1	805	—	—	—	—	5	1,195
<b>OTHER BUSINESS PREMISES</b>												
1996 December	4	388	2	440	1	900	—	—	—	—	7	1,728
1997 January	4	433	—	—	1	998	—	—	—	—	5	1,431
February	5	470	1	450	1	600	—	—	—	—	7	1,520
<b>EDUCATIONAL</b>												
1996 December	2	285	1	200	—	—	—	—	—	—	3	485
1997 January	1	50	—	—	—	—	1	1,003	—	—	2	1,053
February	1	72	1	350	—	—	1	1,350	—	—	3	1,772
<b>RELIGIOUS</b>												
1996 December	—	—	—	—	—	—	—	—	—	—	—	—
1997 January	—	—	—	—	—	—	—	—	—	—	—	—
February	1	60	—	—	—	—	—	—	—	—	1	60
<b>HEALTH</b>												
1996 December	1	55	1	250	—	—	—	—	—	—	2	305
1997 January	3	350	4	1,063	—	—	—	—	—	—	7	1,413
February	1	120	1	200	—	—	1	1,404	—	—	3	1,724
<b>ENTERTAINMENT AND RECREATIONAL</b>												
1996 December	1	90	—	—	—	—	—	—	—	—	1	90
1997 January	4	350	1	370	—	—	—	—	—	—	5	720
February	3	196	—	—	—	—	1	2,080	—	—	4	2,276
<b>MISCELLANEOUS</b>												
1996 December	1	193	—	—	—	—	—	—	—	—	1	193
1997 January	4	413	—	—	1	550	—	—	—	—	5	963
February	3	350	—	—	1	835	—	—	—	—	4	1,185
<b>TOTAL NON-RESIDENTIAL BUILDING</b>												
1996 December	16	1,776	5	1,120	2	1,500	—	—	—	—	23	4,396
1997 January	25	2,585	9	2,643	3	2,148	2	3,503	—	—	39	10,878
February	25	2,433	3	1,000	3	2,240	4	6,834	—	—	35	12,507

TABLE 5: NUMBER OF NEW HOUSES (a) APPROVED BY MATERIAL OF OUTER WALLS (b)

Period	Material of outer walls					Total
	Double brick	Brick veneer	Fibre cement	Timber	Other and not stated	
1988-89	130	2,248	54	374	84	2,890
1989-90	139	1,943	83	384	114	2,663
1990-91	177	1,758	76	467	77	2,555
1991-92	256	1,937	72	515	89	2,869
1992-93	293	1,999	119	476	69	2,956
1993-94	302	2,176	105	441	89	3,113
1994-95	129	1,865	89	428	59	2,570
1995-96	248	1,104	94	335	157	1,938
1995:						
December	21	93	9	13	9	145
1996:						
January	6	85	8	21	15	135
February	20	94	10	21	27	172
March	13	75	10	25	15	138
April	37	68	6	17	13	141
May	57	42	5	28	11	143
June	59	32	4	23	14	132
July	20	54	5	19	10	108
August	16	88	8	31	15	158
September	11	105	2	30	8	156
October	12	94	3	24	21	154
November	32	53	12	18	31	146
December	2	93	5	18	12	130
1997:						
January	5	82	—	23	8	118
February	2	93	4	23	7	129

(a) Excludes Conversions etc. (b) From July 1990 includes only those approvals valued at \$10 000 and over.

TABLE 6: VALUE OF BUILDING APPROVED IN STATISTICAL DIVISIONS (a)  
(\$'000)

Period	Greater Hobart		Southern		Northern		Mersey-Lyell		Tasmania	
	New residential building	All building (b)	New residential building	All building (b)	New residential building	All building (b)	New residential building	All building (b)	New residential building	All building (b)
1988-89	88,215	204,554	23,731	30,180	72,931	126,685	50,967	100,238	235,845	461,657
1989-90	88,156	173,760	23,416	29,823	79,631	118,360	46,182	76,085	237,385	398,028
1990-91	94,266	190,545	25,998	34,220	78,257	112,342	43,755	69,571	242,276	406,678
1991-92	105,027	173,652	28,412	35,994	84,619	118,574	42,238	70,653	260,296	398,873
1992-93	114,154	182,266	27,818	32,593	82,656	116,014	50,634	80,546	275,262	411,419
1993-94	139,703	210,890	34,132	44,022	79,617	127,615	48,511	104,880	301,963	487,407
1994-95	101,301	206,436	22,687	30,302	69,151	115,780	51,483	93,633	244,623	446,152
1995-96	105,158	243,553	19,934	29,637	49,298	110,219	43,056	87,678	217,445	471,086
1995:										
December	10,349	20,528	1,243	1,638	2,459	4,909	4,781	7,997	18,832	35,072
1996:										
January	14,817	49,698	824	1,947	3,412	6,655	4,696	10,925	23,749	69,225
February	6,963	13,958	1,311	1,626	5,551	9,668	2,938	8,677	16,763	33,929
March	5,323	10,645	1,412	1,803	4,191	6,519	2,832	10,147	13,759	29,113
April	10,146	12,432	877	1,111	6,922	16,277	4,867	8,501	22,812	38,321
May	5,243	28,372	1,831	2,064	3,819	12,424	3,325	6,682	14,219	49,541
June	9,037	19,236	2,321	2,813	2,786	5,580	2,015	3,643	16,159	31,272
July	4,864	18,065	1,092	1,407	1,688	18,890	1,883	11,633	9,527	49,996
August	6,136	19,915	1,326	1,586	4,996	10,310	2,589	3,758	15,048	35,569
September	5,729	9,076	950	1,502	3,603	8,211	2,967	6,622	13,249	25,412
October	6,413	14,793	938	1,533	3,342	7,607	4,901	7,558	15,594	31,491
November	5,890	8,533	913	1,668	3,901	7,494	2,647	6,265	13,351	23,960
December	5,685	9,604	770	863	3,880	5,606	2,609	3,637	12,943	19,710
1997:										
January	5,717	13,500	1,685	2,209	2,099	5,650	2,740	5,274	12,241	26,633
February	5,400	11,331	1,979	4,326	3,737	6,866	2,586	6,939	13,702	29,462

(a) See explanatory notes, paragraphs 3-6. (b) Includes new residential buildings specified in the previous column. The items comprising 'All building' are specified in Table 8.

TABLE 7. BUILDING APPROVED IN STATISTICAL LOCAL AREAS, FEBRUARY 1997

Statistical region sectors and statistical local areas (a)	New residential buildings (b)						Alterations and additions to residential buildings (\$'000)	Non-residential building		
	Houses			Other residential buildings				Private sector (\$'000)	Total (\$'000)	Total building (\$'000)
	Private sector (number)	Public sector (number)	Total value (\$'000)	Private sector (number)	Public sector (number)	Total value (\$'000)				
<b>GREATER HOBART-SOUTHERN STATISTICAL DIVISIONS</b>										
Brighton (M)	9	—	683	—	—	—	24	—	—	707
Central Highlands (M)	1	—	30	—	2	164	—	—	—	194
Clarence (C)	7	—	752	—	—	—	446	510	510	1,708
Derwent Valley Pt A & B	—	—	—	—	—	—	25	—	—	25
Glamorgan/Spring Bay (M)	3	—	275	—	—	—	44	70	70	389
Glenorchy (C)	5	5	1,063	3	6	708	81	250	850	2,701
Hobart (C) - Inner & Remainder	7	—	630	3	—	350	558	2,630	2,630	4,168
Huon Valley (M)	5	—	385	—	—	—	83	—	—	468
Kingborough (M) Pt A & B	9	—	930	—	—	—	461	120	120	1,511
Sorell (M) Pt A & B	8	—	460	—	—	—	86	180	180	726
Southern Midlands (M)	10	—	785	—	—	—	18	—	—	803
Tasman (M)	2	—	165	—	—	—	12	—	2,080	2,257
<b>Greater Hobart-Southern (SDs)</b>	<b>66</b>	<b>5</b>	<b>6,158</b>	<b>6</b>	<b>8</b>	<b>1,222</b>	<b>1,838</b>	<b>3,760</b>	<b>6,440</b>	<b>15,657</b>
<b>NORTHERN STATISTICAL DIVISION</b>										
Break O'Day (M)	1	—	160	—	—	—	—	90	90	250
Dorset (M)	3	—	228	—	—	—	17	—	—	245
Flinders (M)	—	—	—	—	—	—	—	—	—	—
George Town (M) Pt A & B	2	—	190	—	—	—	37	180	180	407
Launceston (C) Inner, Pt B & Pt C	11	—	968	—	7	559	320	1,871	1,871	3,718
Meander Valley (M) Pt A & B	9	—	736	—	—	—	76	—	—	812
Northern Midlands (M) Pt A & B	4	—	223	—	—	—	15	108	108	346
West Tamar (M) Pt A & B	8	—	673	—	—	—	356	60	60	1,089
<b>Northern (SD)</b>	<b>38</b>	<b>—</b>	<b>3,178</b>	<b>—</b>	<b>7</b>	<b>559</b>	<b>820</b>	<b>2,309</b>	<b>2,309</b>	<b>6,866</b>
<b>MERSEY-LYELL STATISTICAL DIVISION</b>										
Burnie (C) Pt A & B	7	—	935	—	—	—	37	100	1,065	2,036
Central Coast (M) Pt A & B	3	—	344	—	—	—	143	—	—	487
Circular Head (M)	3	—	213	—	—	—	75	980	980	1,268
Devonport (C)	1	—	100	—	—	—	206	1,446	1,446	1,752
Kentish (M)	2	—	127	—	—	—	—	—	—	127
King Island (M)	1	—	70	—	—	—	23	—	—	93
Latrobe (M) Pt A & B	2	—	560	3	—	160	—	268	268	988
Waratah/Wynyard (M) Pt A & B	1	—	77	—	—	—	112	—	—	189
West Coast (M)	—	—	—	—	—	—	—	—	—	—
<b>Mersey-Lyell (SD)</b>	<b>20</b>	<b>—</b>	<b>2,426</b>	<b>3</b>	<b>—</b>	<b>160</b>	<b>595</b>	<b>2,793</b>	<b>3,758</b>	<b>6,939</b>

For footnote, see end of table.

TABLE 7. BUILDING APPROVED IN STATISTICAL LOCAL AREAS, FEBRUARY 1997—continued

Statistical region sectors and statistical local areas (a)	New residential buildings (b)						Alterations and additions to residential buildings (\$'000)	Non-residential building		
	Houses			Other residential buildings				Private sector (\$'000)	Total (\$'000)	Total building (\$'000)
	Private sector (number)	Public sector (number)	Total value (\$'000)	Private sector (number)	Public sector (number)	Total value (\$'000)				
<b>STATISTICAL DIVISIONS AND SUBDIVISIONS</b>										
Greater Hobart (SD)	43	5	4,343	6	6	1,058	1,640	3,690	4,290	11,331
Southern (SD)	23	—	1,815	—	2	164	197	70	2,150	4,326
Greater Launceston (SSD)	24	—	2,118	—	7	559	697	2,169	2,169	5,543
Central North (SSD)	10	—	672	—	—	—	106	50	50	828
North-Eastern (SSD)	4	—	388	—	—	—	17	90	90	495
Northern (SD)	38	—	3,178	—	7	559	820	2,309	2,309	6,866
Burnie-Devonport (SSD)	12	—	1,859	3	—	160	498	1,814	2,779	5,295
North-Western Rural (SSD)	8	—	567	—	—	—	98	980	980	1,644
Lyell (SSD)	—	—	—	—	—	—	—	—	—	—
Mersey-Lyell (SD)	20	—	2,426	3	—	160	595	2,793	3,758	6,939
<b>Tasmania</b>	<b>124</b>	<b>5</b>	<b>11,761</b>	<b>9</b>	<b>15</b>	<b>1,941</b>	<b>3,253</b>	<b>8,862</b>	<b>12,507</b>	<b>29,461</b>

(a) Statistics are presented in terms of statistical local areas aggregated to their equivalent legal local government areas. (b) Excludes Conversions, etc.

TABLE 8. VALUE OF BUILDING APPROVALS IN STATISTICAL DIVISIONS BY CLASS OF BUILDING, FEBRUARY 1997 (\$'000)

Class of building	Greater Hobart	Southern	Northern	Mersey-Lyell	Tasmania
New houses	4,343	1,815	3,178	2,426	11,761
New other residential building	1,058	164	559	160	1,941
<b>Total new residential building</b>	<b>5,400</b>	<b>1,979</b>	<b>3,737</b>	<b>2,586</b>	<b>13,702</b>
Alterations and additions to residential buildings	1,640	197	820	595	3,253
Hotels etc.	—	—	90	—	90
Shops	2,240	—	250	—	2,490
Factories	—	—	95	100	195
Offices	150	—	—	1,045	1,195
Other business premises	1,110	—	50	360	1,520
Educational	350	—	72	1,350	1,772
Religious	—	—	60	—	60
Health	320	—	1,404	—	1,724
Entertainment and recreational	—	2,150	58	68	2,276
Miscellaneous	120	—	230	835	1,185
<b>Total non-residential building</b>	<b>4,290</b>	<b>2,150</b>	<b>2,309</b>	<b>3,758</b>	<b>12,507</b>
<b>Total building</b>	<b>11,331</b>	<b>4,326</b>	<b>6,866</b>	<b>6,939</b>	<b>29,461</b>

TABLE 9. VALUE OF BUILDING APPROVED AT AVERAGE 1989-90 PRICES (a) (\$ million)

Period	New residential building				Alterations and additions to residential buildings	Non-residential building		Total building	
	Houses		Other residential buildings	Total		Private sector	Total	Private sector	Total
	Private sector	Total							
1993-94	200.5	204.0	58.9	262.9	33.3	80.6	144.9	370.8	441.0
1994-95	172.7	173.1	32.1	205.2	32.7	115.6	158.3	351.7	396.3
1995-96	130.8	132.2	49.6	181.7	29.5	116.0	209.6	313.4	420.9
<i>1995—</i>									
Sept. qtr.	37.2	37.5	7.2	44.8	6.2	24.8	50.3	74.4	101.3
Dec. qtr.	35.7	36.1	9.8	45.9	7.3	31.2	39.6	81.7	92.8
<i>1996—</i>									
Mar. qtr.	29.3	29.9	16.0	45.9	7.9	33.4	65.8	85.1	119.6
June qtr.	28.5	28.6	16.5	45.1	8.1	26.5	53.9	72.2	107.1
Sept. qtr.	28.1	28.5	2.0	30.5	5.8	39.3	63.6	75.7	99.9
Dec. qtr.	29.7	29.9	5.9	35.8	7.3	19.1	21.5	58.8	64.6

(a) See paragraph 2. Explanatory notes. Construction prices estimated subject to revisions each quarter. For more information on prices and building activity

TABLE 10. NEW DWELLING UNITS (a) APPROVED, BY TYPE AND STATISTICAL DIVISION  
FEBRUARY 1997

Statistical division	New other residential building									Total new residential building
	New houses	Semi-detached, row or terrace houses, townhouses, etc. of			Flats, units or apartments in a building of				Total	
		1 storey	2 or more storeys	Total	1-2 storeys	3 storeys	4 or more storeys	Total		
NUMBER OF DWELLING UNITS										
Greater Hobart	48	9	3	12	—	—	—	—	12	60
Southern	23	2	—	2	—	—	—	—	2	25
Northern	38	7	—	7	—	—	—	—	7	45
Mersey-Lyell	20	3	—	3	—	—	—	—	3	23
<b>Tasmania</b>	<b>129</b>	<b>21</b>	<b>3</b>	<b>24</b>	<b>—</b>	<b>—</b>	<b>—</b>	<b>—</b>	<b>24</b>	<b>153</b>
VALUE (\$'000)										
Greater Hobart	4,343	908	150	1,058	—	—	—	—	1,058	5,400
Southern	1,815	164	—	164	—	—	—	—	164	1,979
Northern	3,178	559	—	559	—	—	—	—	559	3,737
Mersey-Lyell	2,426	160	—	160	—	—	—	—	160	2,586
<b>Tasmania</b>	<b>11,761</b>	<b>1,791</b>	<b>150</b>	<b>1,941</b>	<b>—</b>	<b>—</b>	<b>—</b>	<b>—</b>	<b>1,941</b>	<b>13,702</b>

(a) Excludes Conversions, etc.



## EXPLANATORY NOTES

### Introduction

This publication contains monthly details of building work approved.

2. For purposes of comparison, it should be noted that statistics of building approvals are affected from month to month by large projects (e.g. blocks of flats, multi-storey office buildings) approved in particular months and also by the administrative arrangements of government authorities.

### Scope and Coverage

3. Statistics of building work approved are compiled from:

- (a) permits issued by local authorities in areas subject to building control by those authorities;
- (b) contracts let or day labour work authorised by Commonwealth, State, semi-government and local government authorities;
- (c) major building activity which takes place in areas not subject to the normal administrative approval processes (e.g. buildings on remote mine sites).

4. The statistics relate to building activity which includes construction of new buildings, and alterations and additions to existing buildings. Construction activity not defined as building (e.g. construction of roads, bridges, railways, earthworks etc.) is excluded from this publication, but can be found in the ABS publication *Engineering Construction Survey* (8762.0).

5. In relation to work carried out on existing buildings, the statistics include details of non-structural renovation and refurbishment work and the installation of integral building fixtures for which building approval was obtained.

6. From July 1990, the statistics cover:

- (a) all approved new residential building jobs valued at \$10,000 or more (previously \$5,000 or more)
- (b) approved alterations and additions to residential buildings valued at \$10,000 or more
- (c) all approved non-residential building jobs valued at \$50,000 or more (previously \$30,000 or more).

These changes in coverage do not have a statistically significant effect on broad building approvals aggregate data. However, care should be taken in interpreting data for specific classes of non-residential building.

### Definitions

7. A *building* is defined as a rigid, fixed and permanent structure which has a roof. Its intended purpose is primarily to house people, plant, machinery, vehicles, goods or livestock. An integral feature of a building's design, to satisfy its intended use, is the provision for regular access by persons.

8. A *dwelling unit* is defined as a self-contained suite of rooms, including cooking and bathing facilities and intended for long term residential use. Units (whether self-contained or not) within buildings offering institutional care such as hospitals or temporary accommodation, such as motels, hostels and holiday apartments are not defined as dwelling units. The value of units of this type is included in the appropriate category of non-residential buildings approved.

9. A *residential building* is defined as a building predominantly consisting of one or more dwelling units. Residential buildings can be either houses or other residential buildings.

(a) A *house* is defined as a detached building predominantly used for long term residential purposes and consisting of only one dwelling unit. Thus detached granny flats and detached dwelling units such as caretaker's residences associated with non-residential buildings are defined as houses for the purpose of these statistics.

(b) An *other residential building* is defined as a building which is predominantly used for long term residential purposes and which contains (or has attached to it) more than one dwelling unit (e.g. includes town-houses, duplexes, apartment buildings etc.).

10. From the January 1995 issue of this publication, the number of dwelling units approved as part of alterations and additions to or conversions of existing residential or non-residential buildings and as part of the construction of non-residential building is shown separately in Table 1 under the heading of 'Conversions, etc.', and is included in the total number of dwelling units shown in these tables. Previously, such dwellings were only included as a footnote.

11. In addition, from the January 1995 issue, the trend estimates for the number of dwelling units approved, shown in Table 1, include these conversions, etc. Previously, only dwelling units approved as part of the construction of new residential buildings were included in these estimates.

12. The value of new residential building approved continues to exclude the value of dwelling units approved as part of alterations and additions to or conversions of existing residential or non-residential buildings and as part of the construction of non-residential building. Approved building work represented by these conversions, etc. jobs continues to be included in the value of alterations and additions to residential buildings or in the value of non-residential building as appropriate.

13. Value data are derived by aggregation of the estimated value (when completed) of building work (excluding value of land and landscaping but including site preparation) as reported on approval documents. For 'houses', these estimates are usually a reliable indicator of the completed value of the building. However, for 'other residential buildings' and 'non-residential buildings' these estimates can differ significantly from the completed value of the building.

### Building Classification

14. *Ownership of a building* is classified as either Public Sector or Private Sector according to the sector of the intended owner of the completed building as evident at the time of approval. Residential buildings being constructed by private sector builders under government housing authority schemes whereby the authority has contracted, or intends to contract, to purchase the buildings on or before completion, are classified as public sector.

15. *Functional classification of buildings*: a building is classified according to its intended major function. Hence a building which is ancillary to other buildings or forms a part of a group of related buildings is classified to the function of the building and not to the function of the group as a whole. An example of this can be seen in the treatment of building work approved for a factory complex. In this case a detached administration building would be classified to Offices, a detached cafeteria building to Shops, while factory buildings

would be classified to Factories. An exception to this rule is the treatment of group accommodation buildings e.g. a student accommodation building on a university campus would be classified to Educational.

### Estimates at Constant Prices

16. Estimates of the quarterly value of building approvals at average 1989-90 prices are presented in Table 9. (Note: monthly value data at constant prices are not available.)

17. Constant price estimates measure changes in value after the direct effects of price changes have been eliminated. The deflators used to revalue the current price estimates are derived from the same price data underlying the deflators compiled for the dwelling and non-dwelling construction components of the national accounts aggregate 'Gross fixed capital expenditure'.

18. Estimates at constant prices are subject to a number of approximations and assumptions. Further information on the nature and concepts of constant price estimates is contained in Chapter 4 of *Australian National Accounts: Concepts, Sources and Methods* (5216.0).

### Trend Estimates

19. Table 1 shows the trend estimates for total dwellings. These are obtained by applying a 13-term Henderson-weighted moving average to all months of the respective seasonally adjusted series except the last six months. Trend series are created for the last six months by applying surrogates of the Henderson moving average to the seasonally adjusted time series. For further information, see *A Guide to Interpreting Time Series - Monitoring 'Trends': an Overview* (1348.0).

20. While the smoothing technique described in paragraph 19 enables trend estimates to be produced for the latest few months, it does result in revisions to the trend estimates as new data become available. Generally, revisions become smaller over time and, after three months, usually have a negligible impact on the series. Revisions to the original data and re-analysis of seasonal factors may also lead to revisions to the trend.

### Australian Standard Geographical Classification (ASGC)

21. Area statistics are now being classified to the *Australian Standard Geographical Classification, 1996 Edition* (1216.0), effective from 1 July 1996, and ASGC terminology has been adopted in the presentation of building statistics. Further details are:

- (a) The boundaries of Latrobe (M) - Pt A and Latrobe (M) - Pt B were amended by the transfer of part of Latrobe (M) - Pt B to Latrobe (M) - Pt A. There are consequential changes to the Burnie-Devonport and North Western Rural SSDs and the Burnie-Devonport Statistical District.
- (b) The municipal area of New Norfolk has been renamed the municipal area of Derwent Valley. As a result New Norfolk (M) - Pt A and New Norfolk (M) - Pt B have been renamed Derwent Valley (M) - Pt A and Derwent Valley (M) - Pt B respectively.

### Unpublished Data and Related Publications

22. The ABS can also make available certain building approvals data which are not published. Where it is not practicable to provide the required information by telephone, data can be provided in the following forms: microfiche, photocopy, computer printout and clerically extracted tabulation. A charge may be made for providing unpublished information in these forms.

23. Other ABS publications which may be of interest include:

*Building Approvals, Australia* (8731.0) - issued monthly  
*Dwelling Unit Commencements Reported by Approving Authorities, Tasmania* (8741.6) - issued monthly  
*Building Activity, Australia: Dwelling Unit Commencements, Preliminary* (8750.0) - issued monthly  
*Building Activity, Tasmania* (8752.6) - issued quarterly

24. Current publications produced by the ABS are listed in the *Catalogue of Publications and Products, Australia* (1101.0). The ABS also issues, on Tuesdays and Fridays, a *Release Advice* (1105.0) which lists publications to be released in the next few days. The Catalogue and Release Advice are available from any ABS office.

### Symbols and Other Usages

— nil or rounded to zero (including null cells)  
 r figure or series revised since previous issue  
 n.a. not available  
 n.y.a. not yet available

25. Where figures have been rounded, discrepancies may occur between sums of the component items and totals.

**DENIS W. ROGERS**  
 Regional Director



## **For more information . . .**

The ABS publishes a wide range of statistics and other information on Australia's economic and social conditions. Details of what is available in various publications and other products can be found in the ABS Catalogue of Publications and Products available from all ABS Offices.

### **ABS Products and Services**

Many standard products are available from ABS bookshops located in each State and Territory. In addition to these products, information tailored to the needs of clients can be obtained on a wide range of media by contacting your nearest ABS Office. The ABS also provides a Subscription Service for standard products and some tailored information services.

### **National Dial-a-Statistic Line**

0055 86 400

*Steadycom P/L: premium rate 25c/20 secs.*

This number gives 24-hour access, 365 days a year, for a range of important economic statistics including the CPI.

### **Internet**

<http://www.abs.gov.au>

A wide range of ABS information is available via the Internet, with basic statistics available for each State, Territory and Australia. We also have Key National Indicators, ABS product release details and other information of general interest.

## **Sales and Inquiries**

Keylink	STAT.INFO/ABS
X.400	(C:Australia,PUB:Telememo,O:ABS,FN:STAT,SN:INFO)
Internet	stat.info@abs.telememo.au

National Mail Order Service	(06) 252 5249
Subscription Service	1800 02 0608

	<b>Information Inquiries</b>	<b>Bookshop Sales</b>
SYDNEY	(02) 9268 4611	(02) 9268 4620
MELBOURNE	(03) 9615 7755	(03) 9615 7755
BRISBANE	(07) 3222 6351	(07) 3222 6350
PERTH	(09) 360 5140	(09) 360 5307
ADELAIDE	(08) 8237 7100	(08) 8237 7582
CANBERRA	(06) 252 6627	(06) 207 0326
HOBART	(03) 6222 5800	(03) 6222 5800
DARWIN	(08) 8943 2111	(08) 8943 2111



Client Services, ABS, PO Box 10, Belconnen ACT 2616

